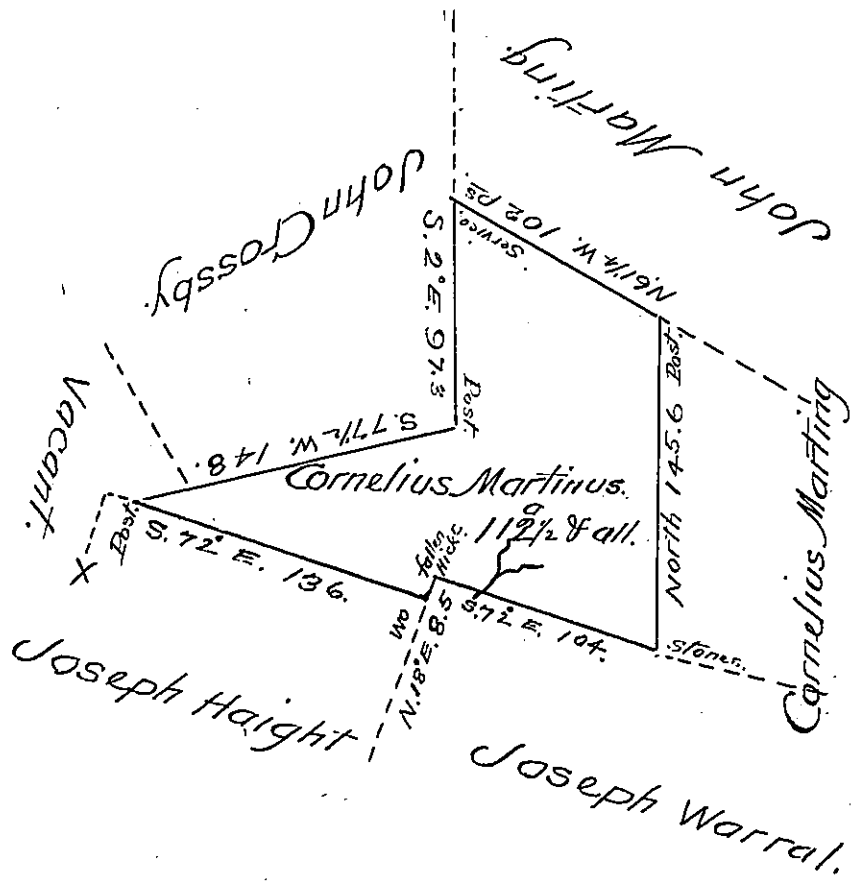


Note - This survey is Entered by A. McClean
 in my office in Book H. page 12th and
 appears to have been returned by him.
 Jno. McClean.



Situate on the waters of Lost Run (~~formerly~~ in Millford)
~~How Somerset~~ Township Somerset County (formerly
 Bedford) and surveyed by Alexander McClean Esquire
 late Deputy Surveyor the 2^d day of August 1793
 in pursuance of a warrant dated the 26th day of
 February 1788 And Certified the 16th November 1803

To Samuel Cochran Esquire Per John McClean
 Surveyor General - Deputy -

IN TESTIMONY that the above is a copy of the original remaining on file in
 the Department of Internal Affairs of Pennsylvania, made
 conformably to an Act of Assembly approved the 16th day of
 February, 1833, I have hereunto set my Hand and caused
 the Seal of said Department to be affixed at Harrisburg,
 this Twenty first day of November 1905.

Joseph P. Pearson
 Secretary of Internal Affairs.